



**surfbee.io**

# Product Selection Guide



**surfbee.io**

# 1

## Choose your system

All our systems are equipped with: Tough Inflatable hull; Dual GNSS with heading standard; Surfbee controller: 5" screen 5Ghz or 2.4Ghz, long range (1km) with Bluetooth and 4G connectivity; HD Camera with live video feedback; Surfbee Enclosure for batteries and autopilot; Surfbee APP for mission planning, RC or Autonomous gauging; Propeller system and Surfbee Gear Bag.



Lateral Movement



**Flow Finder**

Lateral Movement



**Flow Scout**



**Flow Seeker**



Max Speed: 1.8m/s (forwards)  
0.8 m/s (sideways)



Minimal Depth: 0.14 m



Weight: 10 Kg (without Batteries)



Sensor Integration: Sontek RS5 (only)



Dimensions: 1.2 x 0.7 x 0.1 m



Max Speed: 1.8m/s (forwards)  
0.8 m/s (sideways)



Minimal Depth: 0.14 m



Weight: 11 Kg (without Batteries)



Sensor Integration: Multiple payloads up to 8 Kg



Dimensions: 1.35 x 0.7 x 0.1 m



Max Speed: 4m/s (3 m/s cruise)



Minimal Depth: 0.25m



Weight: 13.5 Kg (without Batteries)



Sensor Integration: Multiple payloads up to 10 Kg



Dimensions: 1.65 x 0.75 x 0.1 m

# 2

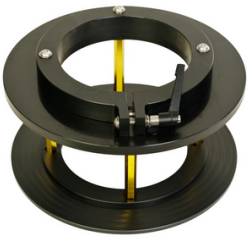
## Multiport hardware - a connection hub



This module seamlessly integrates with your Surfbee's brainbox, providing a Multiport plug for device connectivity. It's a hub of connection that will make it possible providing RTK GPS (RS232) and heading to your sensor. For some sensors, this connection hub can also provide power (12v 2 Ah). It transforms a standard USV into a versatile, multifunction platform, increasing efficiency and operational capabilities for a wide range of tasks and future deployments.

### 3

## Mount your payload



The Sensor Mount is a customizable accessory for the Surfbee system, designed to securely attach your specific sensor or communication board, including Sontek's PCM, to our Vessel. These mounts are highly adaptable, allowing for quick sensor swaps to meet various project needs in a single vessel. Each mount is precision-engineered for stability and reliability during operations ensuring seamless integration for enhanced flexibility and efficiency. Currently available for: Sontek M9, PCM, Sontek RS5 and RDI RiverPro

### 4

## Multiport cable



The Multiport cable is the product that will provide the connection between the Multiport Hardware and the sensor. This will provide GNSS, RTK Corrections and Heading to your sensor.

Currently available for:

Sontek M9 (Splitter Cable)

Sontek RS5

RDI RiverPro (providing power to the ADCP)

Custom payload upon request

### 5

## Improve your experience



**RTK Base Station**

The RTK Base Station enhances the precision of Surfbee USVs by providing Real-Time Kinematic (RTK) corrections, enabling up to 0.1 meter of positioning accuracy. This technology drastically improves navigation and data collection for tasks requiring high precision, making it essential for accurate mapping and environmental studies with your Surfbee USV.



**FlowSled**

A robust floating module designed to integrate with the Flow Seeker in scenarios demanding the benefits of a larger vessel without compromising on storage convenience. The FlowSled provides improved stability and performance in challenging flow conditions.



**Support**

Surfbee's 12 or 36-month support packages enhance your experience by ensuring your systems stay updated with the latest firmware and app enhancements. With up to 5 hours of monthly email and phone support, you gain direct access to expert advice, significantly improving operational efficiency.



**Training**

Surfbee's training program combines theoretical knowledge and practical application to enrich your team's experience. This comprehensive approach ensures a deeper understanding and hands-on proficiency with Surfbee USVs, enhancing the team's operational capabilities and efficiency in the field.

**For enquiries,  
contact us.**

 [surfbee.io](https://surfbee.io)

 [sales@surfbee.io](mailto:sales@surfbee.io)

